

Rise in Big Muddy depends on the rains

By MELINDA ABLARD DIAZ
Associated Press Writer

Watch the sky. Watch the river.
The Missouri River was expected to remain at flood stage through the week and then slowly recede in northwest Missouri, but that hasn't stopped people living in flood-threatened towns from preparing for the worst in case of more rain.
"We can't wait until it's too late," said Allen Cowles, who was helping sandbag Hamburg, Iowa, just north of the Missouri state border.
About 50 families had been evacuated from their homes in the southeastern part of the town of 1,600 people, officials said. As of Wednesday night, the water flooding surrounding fields had not reached downtown.
Flood warnings remained in effect today for large stretches of the Missouri River. The warnings included river towns in northwest Missouri north of Weston and between Miami and Boonville in central Missouri.
A flood warning was issued for the Platte River near Platte City.
Minor flooding occurred Wednesday night in towns along the Missouri, but the river was beginning to fall back without any reports of major damage.
"A half-inch rain in the Missouri River probably won't affect it," said Mike July, senior fore-

caster at the National Weather Service. "But if you start dumping an inch or more over a wide area, it could affect the flooding. The storms will probably be the type that could lay over Sioux Falls, South Dakota, all the way down to Kansas City."
Meteorologists were watching two waves of storms expected to move in from the west by late Wednesday, July said. It was uncertain how much rain would develop.
"The way it would affect flooding doesn't mean the crest would be higher," July said. "But it could keep the river in flood stage for a longer period of time."
At Rulo, Neb., the Missouri was expected to crest at 22 feet by Thursday morning, nearly 5 feet over flood stage. St. Joseph reported 22.89 feet, with a flood stage of 17. The river fell about half a foot in both areas.
In Kansas City, the river rose .65 feet to 28.08 feet, about 4 feet under flood stage. Waverly was about 3 feet over, and Boonville was over by 3 feet.
Minor flooding was reported in low lying areas of St. Joseph and just below Kansas City.
The Nishnabota River near the Missouri border in Iowa crested at 33.2 feet Wednesday morning — more than 15 feet above flood stage. It had fallen to 32.2 by Wednesday afternoon.
Interstate 29 at the Iowa border was closed

Wednesday because of flooding. The Missouri State Highway Patrol diverted traffic around flooded areas. The northbound lanes of the interstate were reopened Thursday morning but the southbound lanes remained closed.
About 90,000 cubic feet per second of water was flowing through the Missouri system on Wednesday, said Red Harris, natural disaster manager for the Omaha District Corps of Engineers.
"It's like a funnel — the stream coming out the end is smaller than what's going in. And the system can only hold so much," Harris said.
The corps on Tuesday decreased water releases out of the Missouri's main stem dams, but the effects would not be felt in the flood area for at least four days, Harris said.
The Nishnabota flows into the Missouri River in extreme northeast Missouri, but two Missouri counties closest to their confluence were spared, with only minor flooding in low-lying farmland.
Officials in Atchison County reported no major flooding and no levee breaks.
In Holt County, an agricultural levee on the Tarkio River broke early Wednesday, flooding parts of Corning and forcing a couple of inches of water into low-lying houses. The Red Cross and other emergency groups were on call in the event of an evacuation, said Ann Derr, Holt County emergency management coordinator.

Columbia Bottom CA open to public, improvements planned

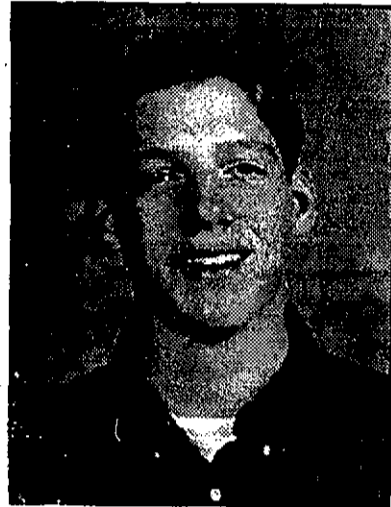
ST. LOUIS (AP) — More than 15 years after it was first proposed, the Columbia Bottom Conservation Area at the confluence of the Missouri and Mississippi rivers is open to the public.
The Missouri Department of Conservation sealed the deal to buy the 4,318 acres of land from the city of St. Louis for \$9.3 million last year for an urban wildlife area. It is preparing a master plan for the area, but in the meantime, the public is invited to visit and make suggestions.
The department has built a 40-car gravel parking lot at the entrance and created two trails that are accessible by foot and bicycle. The gate is still locked to vehicles.
Eventually, the department will have a self-guided, drive-through auto loop, a boat access, a viewing area of the confluence, a visitors center and a system of recreational trails through the landscapes and along the rivers.
"We'll have a mosaic pattern of shallow-water wetlands, bottomland forest, grasslands and probably cropland," said Tom Leifield, the area manager.
Construction work cannot begin until farm leases run out in July 1999. The city originally bought the tract at its northeasternmost tip in St. Louis County in the 1940s as a potential location for a second airport. That plan fell through, and the area was closed to all but city employees who hunted there and six farm families who leased it.
The "area closed" signs were removed last week, and trail markers were put up in their place.
At three times the size of Forest Park, it is the largest tract of green space remaining in the metropolitan area.
The department plans to build a platform to give a better view of where the muddy brown waters of the Missouri mingle with the greener Mississippi.

Three Chillicothe students among those attending American Legion Boys State

Three Chillicothe High School students are attending the American Legion Boys State of Missouri being held this week on the campus of Central Missouri State University in Warrensburg. The boys were selected based on their leadership and citizenship skills.
Steven Kerr, 17, has completed his junior year and is sponsored by Vern R. Glick Post No. 25, The American Legion and the Chillicothe Rotary Club. His accomplishments include 1998 FBLA Adviser's Award; first in Missouri VICA, electronics written test; National Honor Society; outstanding achievements in electronics; advanced math; accounting I. Kerr is a long distance runner for

cross country and track and was the winner of the 1997 5K YMCA Turkey Trot. He is the son of Tom and Marsha Kerr.
Bryce Jackson, 16, is sponsored by the Elks Lodge. His accomplishments include two academic letters, two band letters and a golf letter. He is also the vice president of FBLA and received a 1 rating at music contest at district and state. Jackson also volunteers at the Grand River Area Family YMCA and with the Just Say No Club. He is a member of the A-Plus program, SADD, Spanish Club and has been an employee of Hy-Vee Food Store for two years. He is the son of Lynn and Janis Jackson.
Brad Beetsma, 17, has completed his junior year and is sponsored by

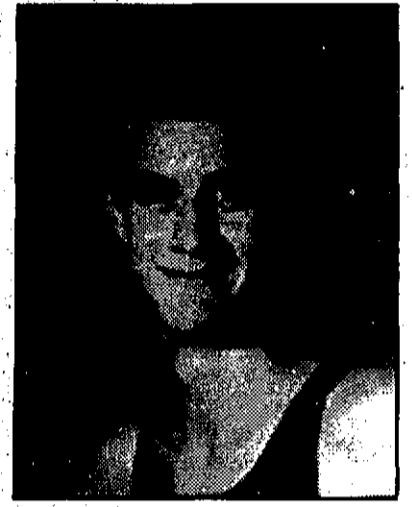
Vern R. Glick Post No. 25, The American Legion. He is a member of National Honor Society, the basketball team, the tennis team and is a student Senator. Beetsma is the son of Ron and Marsha Beetsma.
Boys State is a pure democracy in that all citizens may vote and are eligible to hold office. The program is designed to educate and train Missouri's young leaders in functional citizenship, leadership and government. Nearly 1,000 student leaders will build an entire state government in a single week.
The entire Boys State staff is comprised of educational, legal, professional and civic leaders who volunteer their time each year. Missouri Boys State is sponsored by the Missouri American Legion.



BRAD BEETSMA



BRYCE JACKSON



STEVEN KERR

Fairchild

Continued from page 1

comment, admitted the timing of the decision caught officials off-guard, like opposing teams stung by a Fairchild gridiron strategic staple — the quick-kick.
"There was a lot of surprise when he informed us," he said of himself and the high school administrators. "We knew with what he'd gone through losing Rich that he'd been having some thoughts about it, but with his having taken the team to the team camp at Columbia (operated by Missouri Tigers coach Larry Smith) last week, we'd anticipated he had decided to stay on at least another year."
The superintendent said no contingency plan for a successor was in place, despite the knowledge Fairchild was considering retirement.
"We'll be busy for the next few days, trying to see where we want to go in selecting a replacement," he said.
However, he acknowledged that the timing of the coach's decision, after all teaching and administrative staff positions for next year were already under contract, leaves no choice but for the 1998 season to be coached by someone already on the district staff.
"We'll have to do something in-house," he concurred. "It's too late for us to go out and find someone to bring in."
The clear front-runners for what probably will be an interim post this fall are current assistants Phil Willard and Dave Mapel.
Willard, also a CHS graduate, played for Fairchild in the late 1960s, coached against him while head coach at Moberly in the late '70s and early '80s, and — after returning to Chillicothe from Moberly in the early 1990s — has been an assistant to his mentor the past several years, serving as defen-

sive coordinator. He also has served as assistant coach on the highly-successful boys' basketball program the past several years.
In addition, this past school year he became the coordinator of the district's popular A-Plus academic program, spending half of his day on that assignment and half on physical education instruction.
The other coach likely to receive consideration is Dave Mapel, the assistant with the longest tenure on the current CHS staff.
Mapel, a former multi-sport athlete at Benton High in St. Joseph, is the Hornets' line coach, a segment of the team which was critical to the success created during the Fairchild era.
Mapel has head coaching experience at CHS, guiding the fledgling baseball program in its first two years. The 1998 baseball Hornets overcame a slow start to post a winning season in only their second year of inter-scholastic play.
"It's going to be a traumatic year with (Fairchild) gone," Huddleston predicted. "He's been running the football program for 35 years and that's a major part of this community."
Willard has stated some reluctance in the past to return to head coaching and might decline it, if offered. Mapel, observers believe, would gladly accept the position.
Huddleston expects quick action by the officials involved — Assistant Superintendent Allen Stephens, second-year high school Principal David May, assistant principal and athletic director Bruce Lawson, and school board members — in selecting and offering the post.
"I would think we'd make a decision by the end of this week or the first of next week," Huddleston told the C-T.
The Fairchild Record
His final coaching record will stand at 307 wins, 79 losses, and five

ties. It includes five state championships at CHS (1970, '72, '78, '85, and '91), two state runner-up finishes (1988, 1993), 15 state playoff teams, and numerous conference championships in both versions of the North Central Missouri Conference and the Hornets' current league, the Midland Empire Conference.
Four of his teams (1965, '69, '70, '78) had perfect seasons (no losses, no ties). There were no state football playoffs established in 1965 and the 1969 team failed to qualify for the limited playoff system, under the then-used points system, despite its unblemished record.
The summer 1959 Northwest Missouri State University graduate began his teaching and coaching career that fall at Skidmore High, which had no football program — Fairchild coached the boys' basketball team to the Class S state tournament.
In 1960, he moved to nearby Mound City High, where he coached football, basketball and track for two years, then spent a year doing the same at nearby Hamilton before taking the CHS job, replacing Harry Hayes for the 1963 season.
His first year at the helm of what previously had been a moribund program produced a 6-2-1 record and Hornet Country has been abuzz with football frenzy ever since.
He was one of 21 coaches induct-

ed as charter members of the Missouri High School Football Coaches Association Hall of Fame when that group began its Hall in 1992.
After guiding the Hornets to their state runner-up finish in 1993, he was chosen Regional Coach of the Year (Missouri, Kansas, Oklahoma, Arkansas, Texas, Louisiana, Mississippi) by the National Football Coaches Association and was runner-up for its National Coach of the Year honor.
Milestone Year Tragedy-Marred
Fairchild reached a monumental personal milestone when he coached his 300th victory early last October, only to have that joy tempered by his brother having been stricken with what turned out to be a fatal illness only a week before. After Rich, Fairchild fell ill, his brother would travel from Chillicothe to the Kansas City hospital most days of the week, then return in time for practice or games.
"Bob Fairchild's own health wasn't the best during the time his younger brother was battling for his life. Bob underwent apparently successful surgery for prostate cancer after the 1997 high school football season ended. A recent inquiry as to his health brought a response that he was doing fine."
(Sports Editor Bob Carter contributed information to this story.)

Academy

Continued from page 1

Charlottesville, Va. He said the program has proven to be successful throughout the country.
"Nationwide, law enforcement agencies with citizen police academies report that these programs develop strong advocates as well as identify citizens who become resources for their local police departments," he said. "We are confident that the same benefits can be realized here in our community. The academy creates ambassadors for the police department and is one program that helps get out a lot of good and accurate information about the police department."
Anyone interested in the academy may pick up an information packet and application at the police department. Applications must be received no later than July 10 for this year's session. Class size is limited to 20.

Utica

Continued from page 1

duck pond.
There will also be cakewalks and free drawings throughout the day for items donated by merchants.
Entertainment throughout the day includes performances by Darren Wever and Jackie Burgett Job, and an 8 p.m. performance by Janet Searcy. Drawings will also be held in the evening.
All activities after the parade will be held right around the Utica Fire District building, except for the basketball and softball games.
Visitors are encouraged to bring their lawn chairs and spend the entire day enjoying Utica Fun Days, according to event spokesperson Debbie Anderson.

TIPS HOTLINE
For Livingston County
CALL 707-TIPS
(8477)

VIC TOYOTA
1607 BELT HWY. IN ST. JOSEPH
816-279-2711

24% FINANCING
FOR 24 MONTHS OR
3.6% FOR 36 MONTHS
4.8% FOR 48 MONTHS
6.0% FOR 60 MONTHS

NEW '98 CAMRYS
4 DOOR MODELS
New Low Price!
\$16,595 PLUS FREIGHT & OPTIONS

LEASE FOR ONLY... \$206.66 MO FOR 36 MONTHS

NEW '98 TACOMA 4X4
Alr, 31" tires, SX Pkg. and more.
M.B.R.P. \$21,713
VALUE PKG. DISC. 2,400
VIC VOLUME DISC. 2,718
\$16,598
OR BUY FOR ONLY...

©2006 99 mo/36 month lease. Zero down. *Tax, title, license, and fees extra. Available with approved credit. First month's payment and security deposit due at lease signing. 12,000 mile limit per year. See us for details. All advertising vehicles are priced less any rebate from a manufacturer of Vic Toyota.

Don't miss a single issue...
Subscribe today!

SEWELL AUCTION SERVICE

HOUSEHOLD & COLLECTIBLES AUCTION
10:00 SATURDAY
June 20th, 1998
3 BLOCKS EAST OF HIGH SCHOOL ON 304 E. CRANDALL STREET IN MEADVILLE, MO.
DUE TO THE DEATH OF MY HUSBAND I WILL SELL THE FOLLOWING:
Owner: Mrs. MAURICE (DEAN) SESSIONS
660-938-4383

HOUSEHOLD
KING SIZE BRASS BED & BEDDING; QUEEN SIZE PINE BED; LARGE DRESSER; DESK; OAK LIBRARY TABLE; 2 WING CHAIRS; 2 FLOOR LAMPS; OAK KITCHEN TABLE & CHAIRS; 6 WINGBACK CHAIRS; 20 CU. FT. FRIGIDAIRE; SIDE BY SIDE; LARGE CHINA HUTCH; AMANA MICROWAVE; SEARS WASHER & DRYER; END CABINET; LARGE MIRROR; KRAUT CUTTER; SET OF SHEFFIELD CHINA; BEER SIGNS; CLUB ALUMINUM; HALL TREE; JACUZZI TUB ATTACHMENT; 42" CEILING FAN; METAL CABINET; FOOD PROCESSOR; 8 NEW SLIDING WINDOWS; 2 BBQ LP GRILLS; METAL LAWN CHAIRS; METAL PATIO SET; 2 FREEZERS; 6 BIKES; STACKING CHAIRS; SMALL COLOR TV; SINGER SWEEPER; PICNIC TABLE; FANS; CUT GLASS; COOKWARE; MORE.

ANTIQUES & COLLECTIBLES
OLD CLOCK, GERANIUM #3; ANSONIA WALL CLOCK; OAK TABLE; SCHOOL SLATE; SCHOOL CHALK BOARD; OAK DRESSER; LUCKY STRIKE TIN; STONE JUGS; LARGE DINNER BELL #8; WINDMILL; WESTERN FLYER WAGON; BRASS BIRD CAGE; OAK TABLE; LARGE OAK CHAIR; LARGE MAHOGANY DRESSER W/MIRROR; OAK STOOL; RECTANGLE OAK TABLE W/CHAIRS; WALNUT DRESSER; WALNUT WASH STAND; MEADVILLE DEPOT SIGN; TREADLE SEWING MACHINE; OLD WICKER SET (100 YEARS OLD); LARD PRESS; 2-LEATHER TOP INLAYED TABLES; WOODEN ROCKING HORSE; KERSENE LANTERN; SETH THOMAS OAK WALL CLOCK; LAWN JOCKEY HOLDING LAMP; HITCHING POST W/BOY; LARGE DINNER BELL #8; WINDMILL; 2 LARGE BLACK KETTLES; MANY MORE COLLECTIBLES; MUCH MORE.

SELLS AT 12:00 NOON

RARE STEEL CRAFT 1930s PEDAL CAR PACKARD?? ELECTRIC LIGHTS & HORN, WITH TILT WINDSHIELD (GOOD CONDITION).
TRACTOR, AUTOS, MOPED
M FARMALL W; 85 DODGE ARIES STATION WAGON (AS IS); 77 LINCOLN TOWN CAR (AS IS); 79 CHRYSLER NEW YORKER; SUZUKI MOPED.
TOOLS, GUNS, MISC.
SNAPPER RIDING LAWN MOWER; HAND TOOLS; GARDEN TOOLS; CHAIN SAW; SEVERAL LADDERS; 8 HP GARDEN TILLER; 16 GA. SHOTGUN; 12 G. FOLDING SECURITY GUN; 22 CAL. 840 STEPHENS RIFLE; 2 WHEEL TRAILER; LUMBER; BRICKS; FUEL TANKS; 8 NEW SLIDING WINDOWS; EQUALIZER HITCH; SINGLE & DOUBLE TREES.
AUCTIONEER'S NOTE: MR. SESSIONS COLLECTED A VARIETY OF THINGS. THERE SHOULD BE SOMETHING OF INTEREST FOR EVERYONE. THIS WILL BE AN ALL DAY AUCTION.

Auction conducted by SEWELL AUCTION SERVICE
660-646-4020 Office
660-755-4020 Home
Licensed Auctioneers